

# Your Guide to Assessments

This might be the first time you've heard about annual assessments, but they're one of the most important benefits your family can gain from our program! That's why we put together this guide: To help you understand what they are, why they're so important for your family, and what they can teach us all.



## What are assessments?

Assessments are measurement tools developed by third-party organizations (we use TerraNova® and BRIGANCE®) that help us understand how well kids are meeting key developmental milestones.

Assessments look at academic skills like literacy and numeracy, social-emotional skills like independence and emotional expression, and physical skills like gross and fine motor dexterity. Teachers make sure to create a low-pressure "screening" environment where kids feel comfortable. Most kids experience assessments as just another fun day at KinderCare!

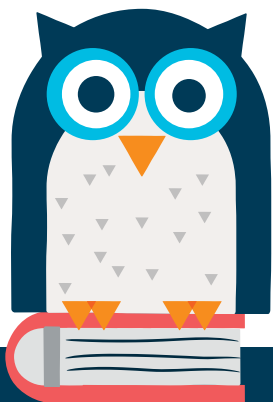
We conduct assessments annually to make sure we have meaningful insight into how our students (even the littlest ones) and our programs are doing.#



## Why are school assessments so important for your child and our educators?

You know how they say that kids are like sponges? It's true! The window of time between infancy and age six is when children learn better and develop more than any other time in their lives. So, while anyone can be a lifelong learner, you simply can't make up for how much can be learned when you're young.

Assessments are one of the ways we measure how well our students are meeting key developmental milestones (or norms). "Developmental norms" are created by statistical curves, and we use them as a benchmark for comparing children's advancement. So, when we say children "do better," we mean they've shown more advanced skills than a group of their same-age peers.





## 12 fun questions your kids might be asked during assessment screenings (depending upon their age).

Most of our assessments are provided by **TerraNova**<sup>®</sup> and **BRIGANCE**<sup>®</sup>, and are administered by our teachers.<sup>%</sup> Depending upon your child's age, teachers might simply observe and report. For kids who are old enough to participate in assessments more independently, teachers will engage them by asking questions, completing questionnaires, and observing their behaviors.

**TerraNova** focuses on early math and early reading skills. Depending on the age of your child, the **TerraNova** reading screening might begin with the teacher reading a passage out loud and asking questions like:

- Where was the elephant going?
- What happened at the beginning of the story?
- What happened at the end?
- Which words in this story rhyme?

Depending upon the age of the child, in math the **TerraNova** screening students might:

- Predict which picture will come next in a pattern.
- Count and answer questions about adding two numbers together.
- Compare different sized objects to each other.
- Demonstrate knowledge of the idea of "more" and "less."
- Identify the names of shapes, the values of coins, and the sequence of days in the week.

**BRIGANCE** looks at language development, physical development, academic and cognitive development, social emotional development, and self-help skills. Our teachers administer this screening for infants through six-year-olds based on specific skills they look for during their observations and interactions with each child.



Depending upon the age of the child, kids might be asked questions like:

- What's your name?
- When's your birthday?
- Can you stand on one foot?

Kids might also be asked to identify letters and their sounds, recite the alphabet, copy patterns and pictures, and more. Babies are assessed by looking for other developmental clues like babbling, sitting up, learning to crawl, and more.

**B**

**A**

**1**

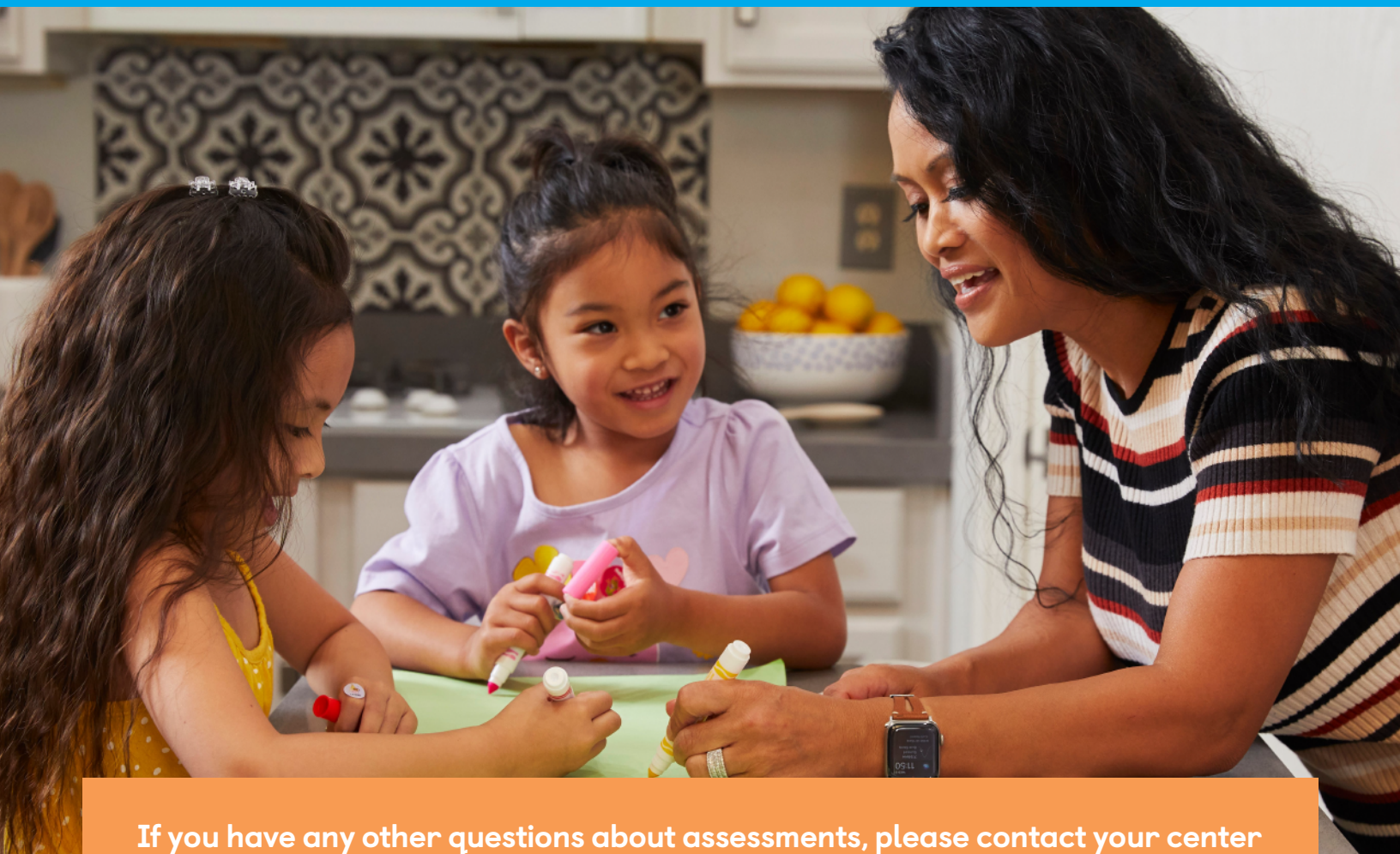


## Assessment results can help us customize your child's learning.

School assessments are one way our educators can make sure students are meeting expectations in key learning areas. Assessment findings give our teachers valuable insights about your child, and can be used as a starting point for conversation with you about your child's strengths and areas for growth and development.

Remember, we're not doctors, we're educators! We don't use our assessments to make any kind of diagnosis for your child, nor do we use them to determine gifted or talented potential. But we can use them to help families identify when an early intervention referral might be useful.

We're always looking for ways to do better, try harder, and push ourselves further. Assessments can help us quality-check our own program offerings so we can make sure to give your child an exceptional learning experience.



**If you have any other questions about assessments, please contact your center director who knows all about the assessment process in your location.**

\*BRIGANCE® results are based on assessments of 14,417 students ages six weeks to six years old in 373 KinderCare Education centers and sites from our KinderCare Learning Centers, KinderCare Education at Work Centers, and Champions brands nationwide from fall 2020 to spring 2021. TerraNova® results are based on spring 2021 assessments of 1,299 students in private kindergarten classrooms in 145 KinderCare Learning Centers and KinderCare Education at Work Centers nationwide.

#TerraNova is used for every KinderCare program that has a private Kindergarten. BRIGANCE is currently used in select centers, and we are working toward bringing it to all centers in the future.

\*ASQ (Ages and Stages Questionnaire) is a parent-administered assessment that we utilize as part of the screening process in select centers.